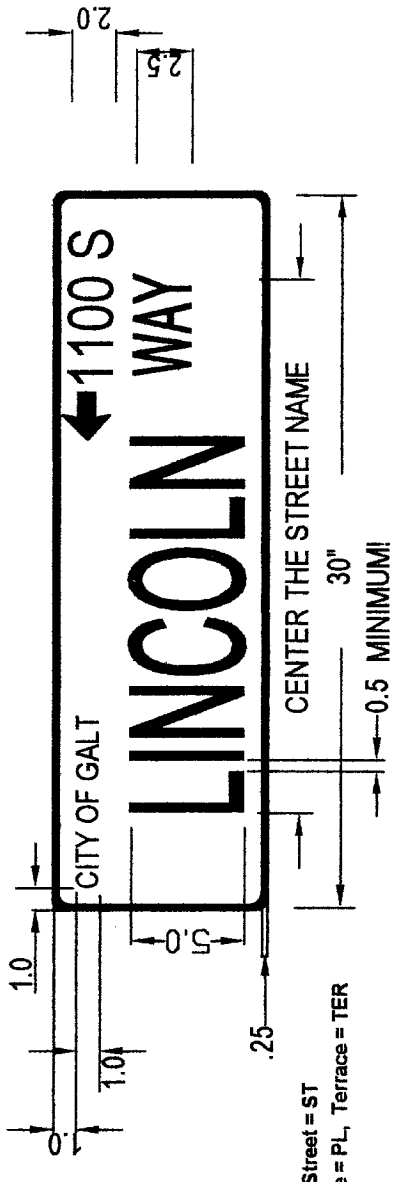


MAST MOUNTED STREET SIGN DETAIL

NOTE: THIS SIGN IS USED FOR OVERHEAD MAST MOUNTING. USE HAWKINS 250 SWING SIGN BRACKETS, OR APPROVED EQUAL.

Signs shall be parallel to the cross street, perpendicular (facing) the approach street. Place four signs per intersection, two for each street.



STANDARD STREET SIGN DETAIL

NOTE: FOR MOUNTING ON LIGHT POLES, USE WESTERN HIGHWAYS CANTILEVER ARM SUPPORT #1010, OR APPROVED EQUAL.

NOTE: Abbreviate where appropriate, as follows:
 North = N., South = S., West = W., East = E.
 Road = RD, Drive = DR, Lane = LN, Court = CT, Street = ST
 Avenue = AVE, Way = WAY, Trail = TRAIL, Place = PL, Terrace = TER

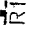
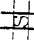
NOTES FOR STANDARD STREET SIGN ONLY:

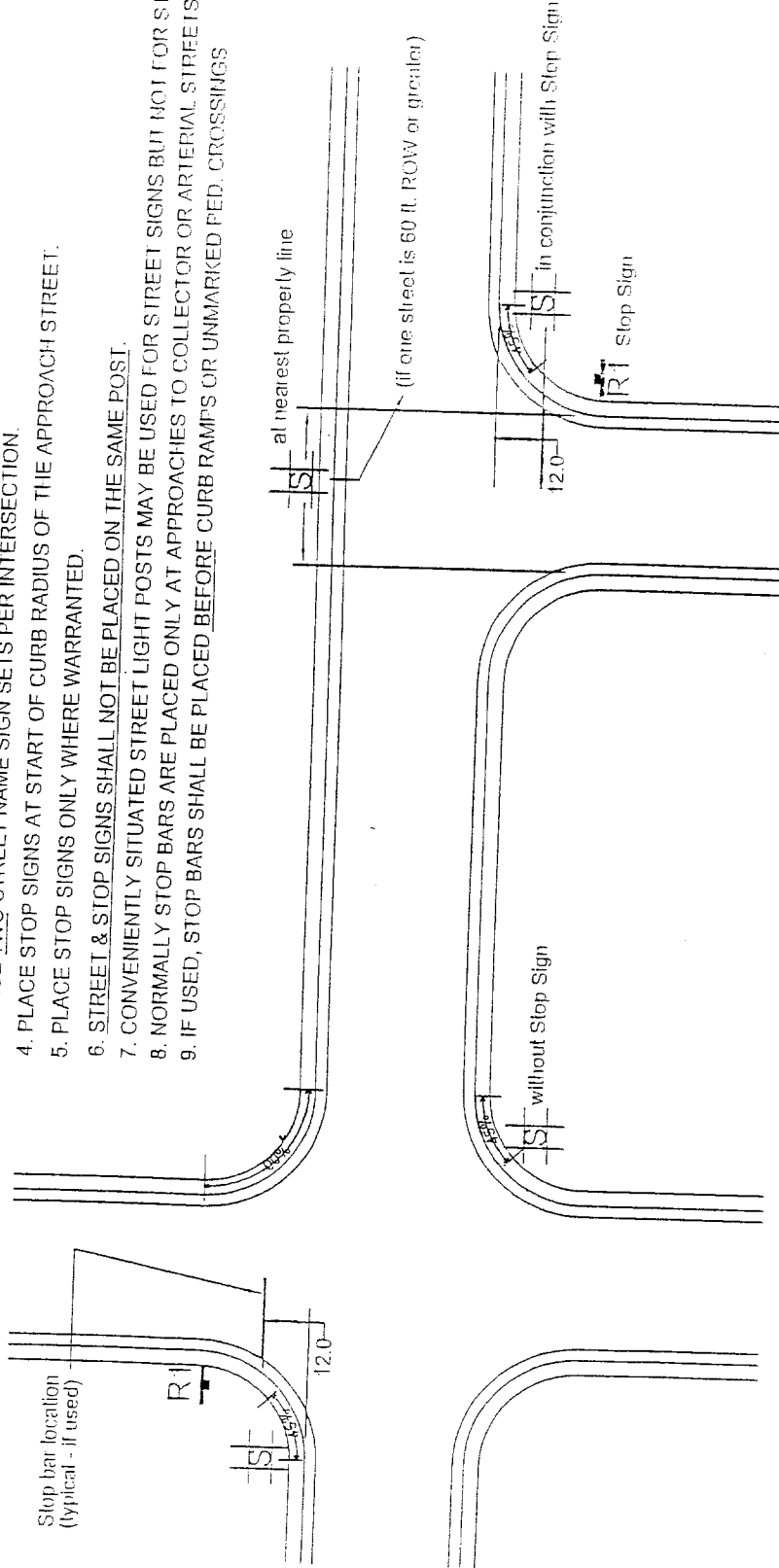
- 1. MATERIALS:** ALUMINUM SHEET ALLOY 6061 - T6 0.080" GAUGE ROUNDED CORNERS 0.5" RADIUS. POSTS SHALL BE 2" GALVANIZED STEEL PIPE. SIGN SHALL BE DOUBLE SIDED.
- 2. REFLECTIVITY:** DIAMOND GRADE FOR ENTIRE SIGN
- 3. LEGEND:** HIGHWAY GOTHIC, WIDTH SERIES "B" AT 100% ONLY, EXCEPT "CITY OF GALT" TO BE SERIES "D" SUBMIT ALL REQUIRED ABBREVIATIONS FOR APPROVAL. NUMBERING SHALL BE IN UPPER RIGHT HAND CORNER. THE STREET NAME SHALL BE CENTERED HORIZONTALLY.
- 4. COLORS:** WHITE LEGEND AND TRIM ON GREEN BACKGROUND.
- 5. DIMENSIONS:** (ARE GIVEN IN INCHES) HEIGHT 9" X 30" LENGTH. LENGTH MAY BE 36" IF NECESSARY. IN THIS CASE, CROSS STREET SIGN SHALL BE THE SAME LENGTH.
- 6. OTHER:** IN STREETS WITH ONLY A LETTER FOR THE NAME, "STREET" SHALL BE SPELLED OUT IN 5" LETTERS. ADDRESS BLOCK NUMBERS WILL BE INCLUDED AS REQUIRED BY THE CITY ENGINEER.

APPROVED: DIRECTOR

CITY OF GALT PUBLIC WORKS DEPARTMENT
STREET SIGN FULLY REFLECTORIZED
SCALE: NONE DATE: 04-05 MODIFIED BY: C.O.G. STAFF
4-33A

NOTES:

1. R1 = STOP SIGN 
2. S = STREET NAME SIGN SETS 
3. PLACE TWO STREET NAME SIGN SETS PER INTERSECTION.
4. PLACE STOP SIGNS AT START OF CURB RADIUS OF THE APPROACH STREET.
5. PLACE STOP SIGNS ONLY WHERE WARRANTED.
6. STREET & STOP SIGNS SHALL NOT BE PLACED ON THE SAME POST.
7. CONVENIENTLY SITUATED STREET LIGHT POSTS MAY BE USED FOR STREET SIGNS BUT NOT FOR STOP SIGNS.
8. NORMALLY STOP BARS ARE PLACED ONLY AT APPROACHES TO COLLECTOR OR ARTERIAL STREETS.
9. IF USED, STOP BARS SHALL BE PLACED BEFORE CURB RAMPS OR UNMARKED FED. CROSSINGS

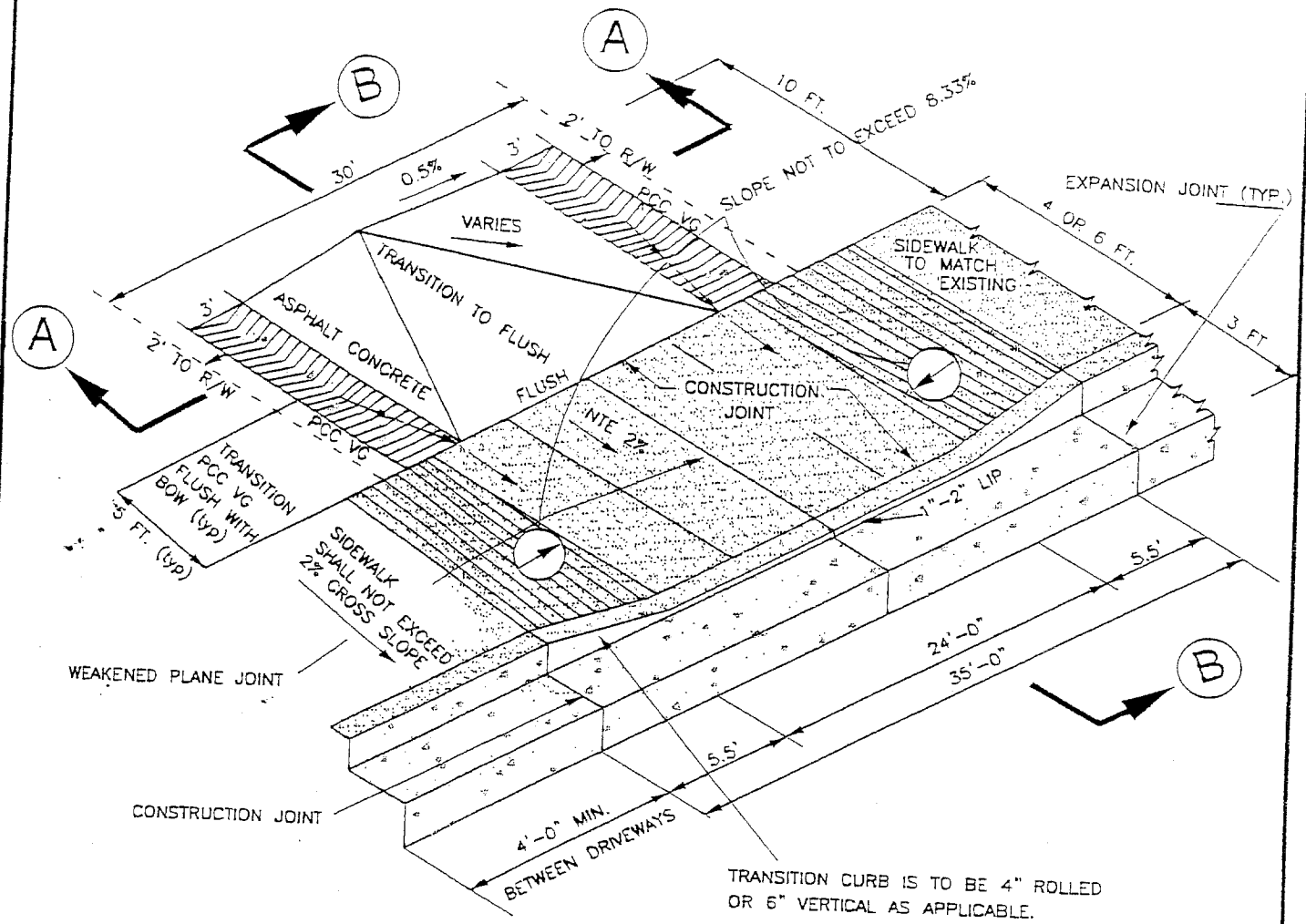


Scale: 1 inch = 50 feet
October, 2003

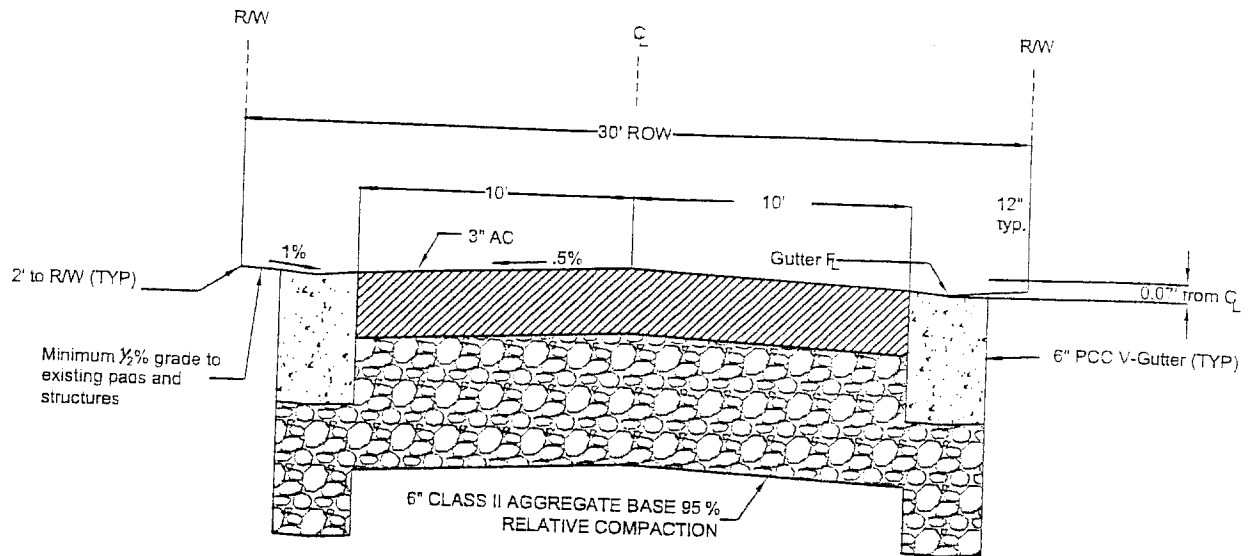
Street and Stop Sign Placement Details

CITY OF GALT
PUBLIC WORKS DEPARTMENT

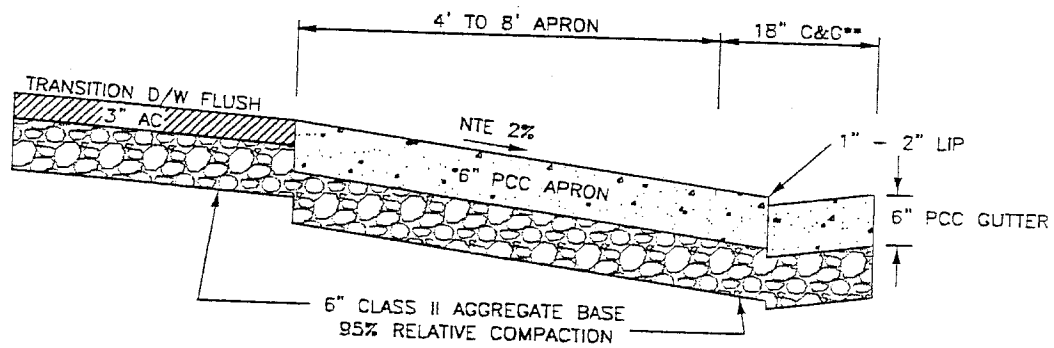
4-37A



			CITY OF GALT		ALLEY DRIVEWAY		DWG. No. A-1	
REV.	DATE	BY	DRAWN BY: J.VINE		ATTACHED SIDEWALK		P:\ENG\GALT\ALLEY.DWG	
			DATE: 11/30/01 SCALE: None					
			CHECKED BY: GW & RB					
			APPROVED BY:					
			Director of Public Works		Date:		SHT. 1 OF 2	



SECTION A-A



SECTION B-B

**TYPE 2 OR 1A CURB AND GUTTER PER SAC COUNTY STANDARDS

NOTES: 1. ALL WORK SHALL CONFORM TO CURRENT A.D.A. REQUIREMENTS.

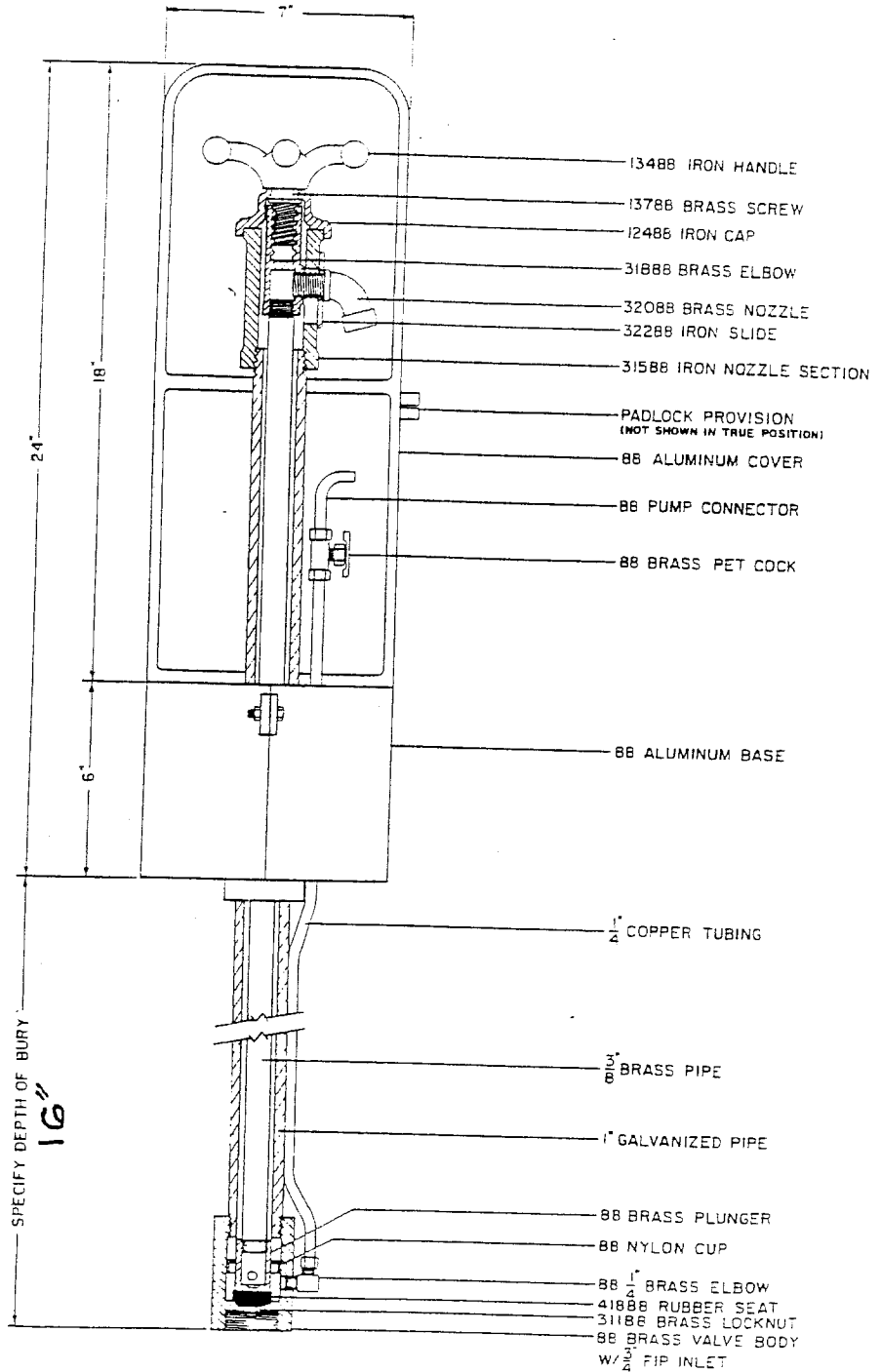
CITY OF GALT			ALLEY DRIVEWAY		DWG. No. A-2
REV.	DATE	BY	DRAWN BY: J.VINE		P: \ENG\GALT\ALLEY.dwg
			DATE: 11/30/01 SCALE: None		
			CHECKED BY: GW & RB		SHT. 2 OF 2
			APPROVED BY:		
			Director of Public Works		Date:

ECLIPSE NO. 80 Sampling Station

PATENTED

Standard Specifications:

Sampling Stations shall be ___' bury, with a 3/4" FIP inlet, and a (3/4" hose or unthreaded) nozzle. All stations shall be enclosed in a lockable, nonremovable, aluminum-cast housing. When opened, the station shall require no key for operation, and the water will flow in an all-brass waterway. All working parts will also be of brass and be removable from above ground with no digging. A copper vent tube will enable each station to be pumped free of standing water to prevent freezing and to minimize bacteria growth. The exterior piping will be galvanized, as manufactured by Kupferle Foundry, St. Louis, MO 63102.



ECLIPSE
TRADE MARK
Since 1857



THE KUPFERLE FOUNDRY COMPANY

Eclipse Sampling Station

PATENTED

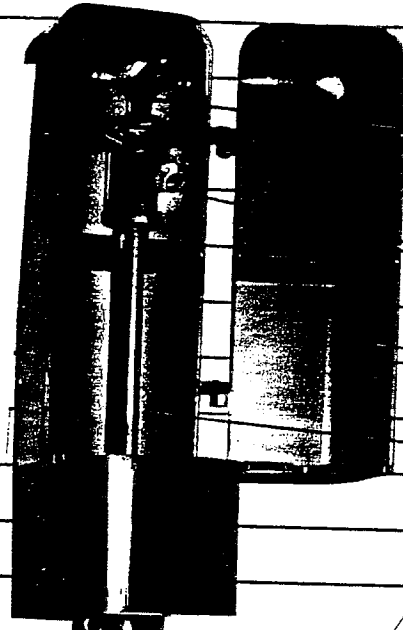


CAMELLIA VALLEY SUPPLY

8732 Fruitridge Road
 Sacramento, CA 95826
 Pager (916) 762-1464
 Fax (916) 381-7445
 (916) 381-6100

Herb Waller
 Sales

a division of **PACIFIC COAST**
 building products



You can replace all interior parts without disturbing connections. Just unbolt the top cap and withdraw the inside working parts without digging.

3/4" hose connection or unthreaded brass nozzle for easy flaming.

Aluminum weathershield with handy interior shelving for supplies and storage.

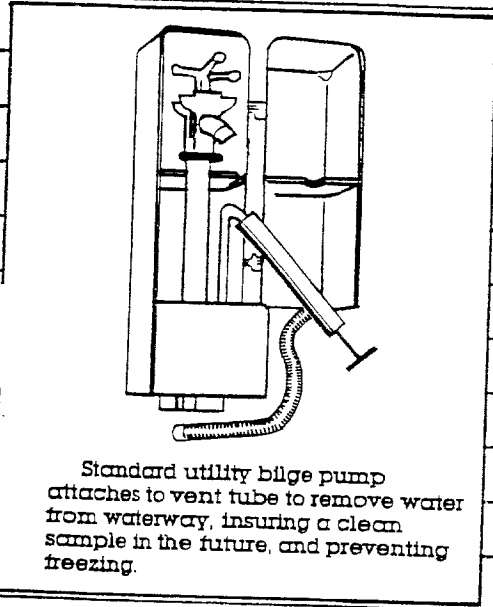
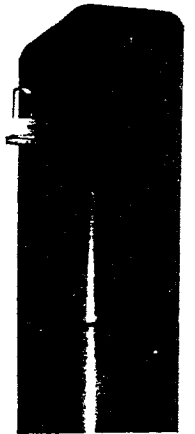
Vent tube with open/close valve.

Brass interior pipe isolates water flow and maintains consistency of brass interior parts, insuring maximum sample quality.

Galvanized riser pipe for exterior protection.

Brass valve body with 3/4" FIP inlet.

When closed, the Eclipse Sampling Station is a secure, environmentally pleasing utility fixture.



Call Toll Free
 Outside Missouri
1-800-231-3990

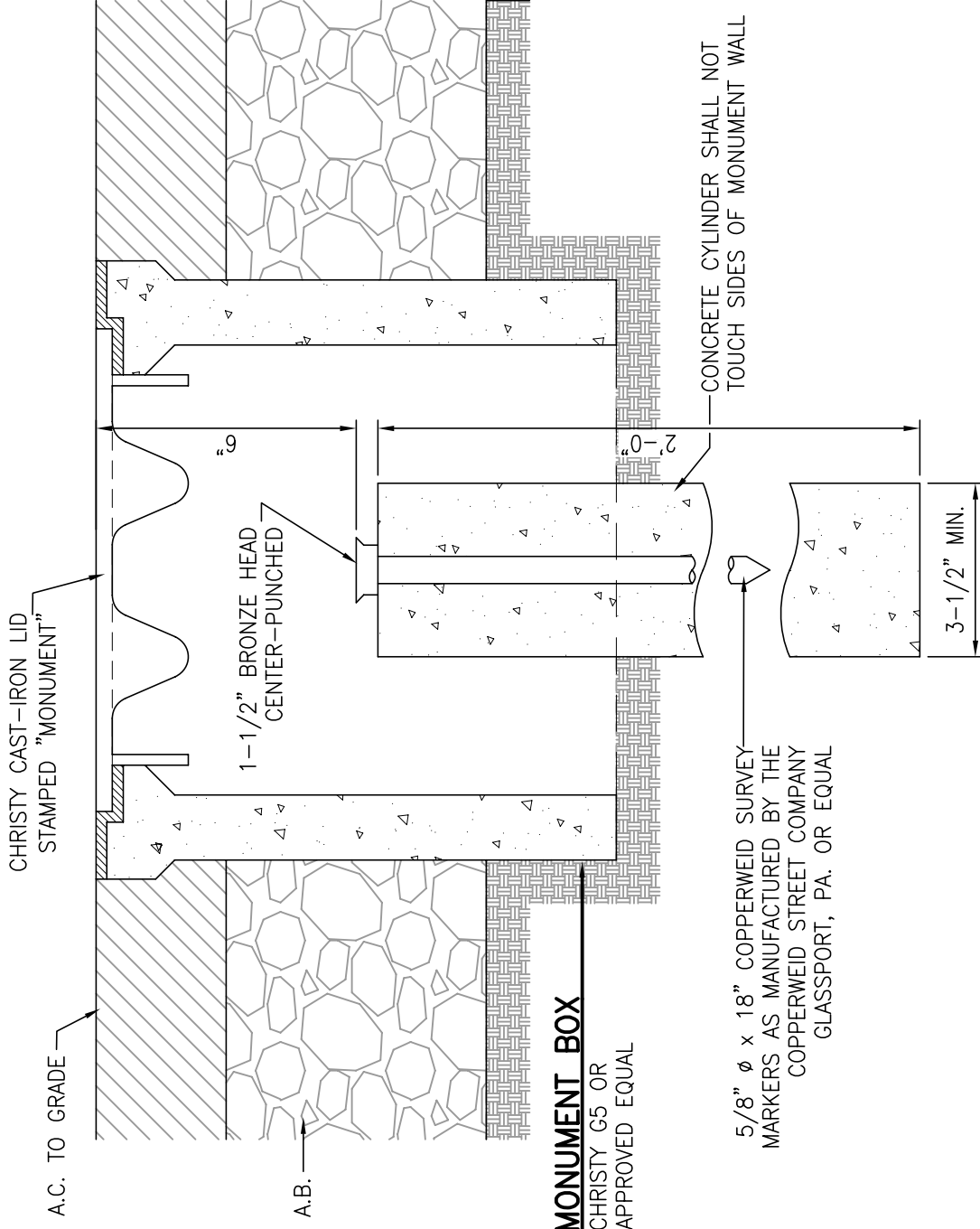
ECLIPSE
TRADE MARK REGISTERED
 Since 1857



THE KUPFERLE FOUNDRY COMPANY

813 HEMPSTEAD STREET / ST. LOUIS, MISSOURI 63102
 314-231-8738

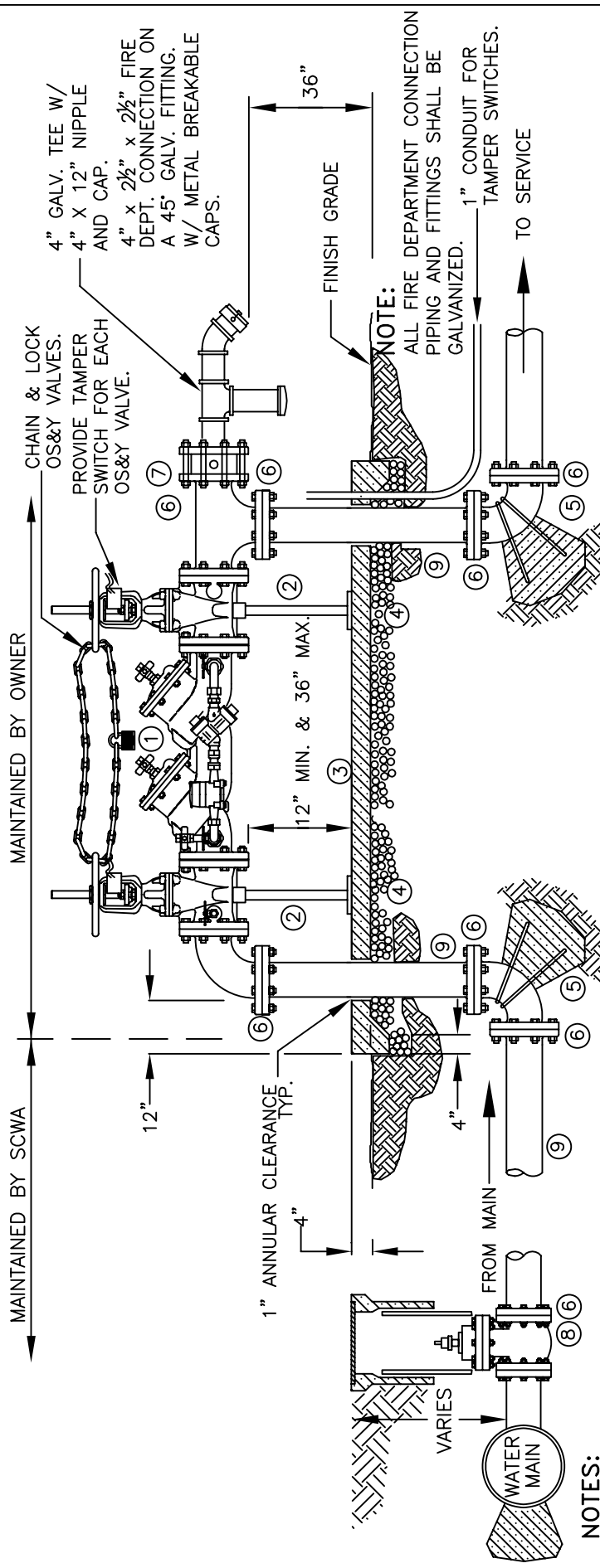




Scale: No Scale
May 2007

Box Survey Monument

CITY OF GALT
PUBLIC WORKS DEPARTMENT



NOTES:

DOUBLE CHECK DETECTOR ASSEMBLY SHALL BE APPROVED BY THE STATE OF CALIFORNIA DEPT. OF HEALTH SERVICES AND BE ON THE MOST RECENT LIST OF APPROVED BACKFLOW PREVENTION ASSEMBLIES FOR SERVICE ISOLATION FROM THE USC FOUNDATION.

*(www.dhs.ca.gov/ps/dwem/publications/pubindex.htm)
 *(www.usc.edu/dept/fccchr)

PIPE SHALL BE DUCTILE IRON. ABOVE GROUND JOINTS SHALL BE FLANGED. BURIED JOINTS SHALL BE FLANGED OR RESTRAINED MJ. FLANGES SHALL BE CLASS D.

INSTALL LOCATING WIRE PER 8-4.

ALL BURIED METAL SHALL BE ENCASED WITH 8 MIL. POLYETHYLENE SO THAT NO SOIL IS IN CONTACT WITH METAL.

- ① DOUBLE CHECK DETECTOR ASSEMBLY W/ FLANGED OS&Y VALVES.
- ② PIPE SUPPORT, 2" GALVANIZED SCH 40 AT MINIMUM.
- ③ 4" CONCRETE SLAB - 24" WIDE WITH VARYING LENGTH.
- ④ 6" OF CRUSHED AGGREGATE COMPACTED TO 95% COMPACTION

- ⑤ THRUST BLOCK WITH #5 REBARS. WRAP THE PORTION OF THE REBAR THAT IS NOT EMBEDDED IN THE CONCRETE WITH 20 MIL POLYETHYLENE TAPE. (SEE 8-3A)
- ⑥ FLANGED CONNECTION ONLY.
- ⑦ WAFER CHECK VALVE
- ⑧ GATE VALVE, WITH BOTH ENDS FLANGED.
- ⑨ DUCTILE IRON PIPE RESTRAINED.

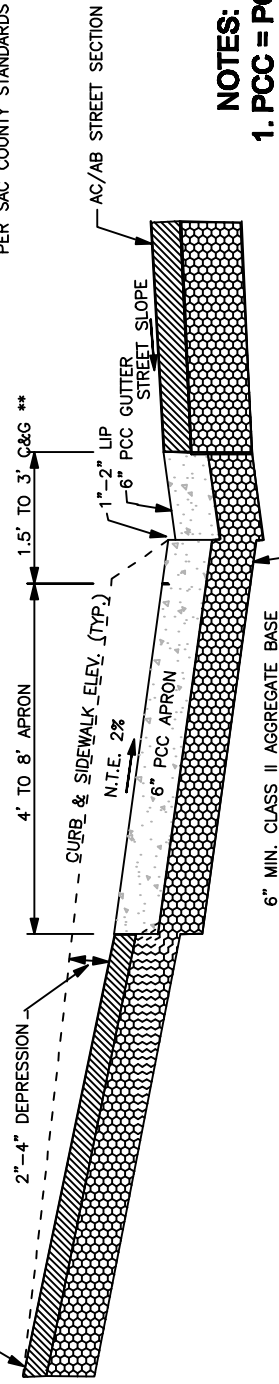
NOTE:
 ALL FIRE DEPARTMENT CONNECTION PIPING AND FITTINGS SHALL BE GALVANIZED.

4" GALV. TEE W/
 4" X 12" NIPPLE
 AND CAP.
 4" x 2 1/2" x 2 1/2" FIRE
 DEPT. CONNECTION ON
 A 45° GALV. FITTING.
 W/ METAL BREAKABLE
 CAPS.

SACRAMENTO COUNTY MUNICIPAL SERVICES AGENCY	
FIRE PROTECTION DETAIL	
SCALE: NONE DATE:	8-7

THIS DETAIL SUPERCEDES ALL PREVIOUS VERSIONS OF THIS DETAIL.

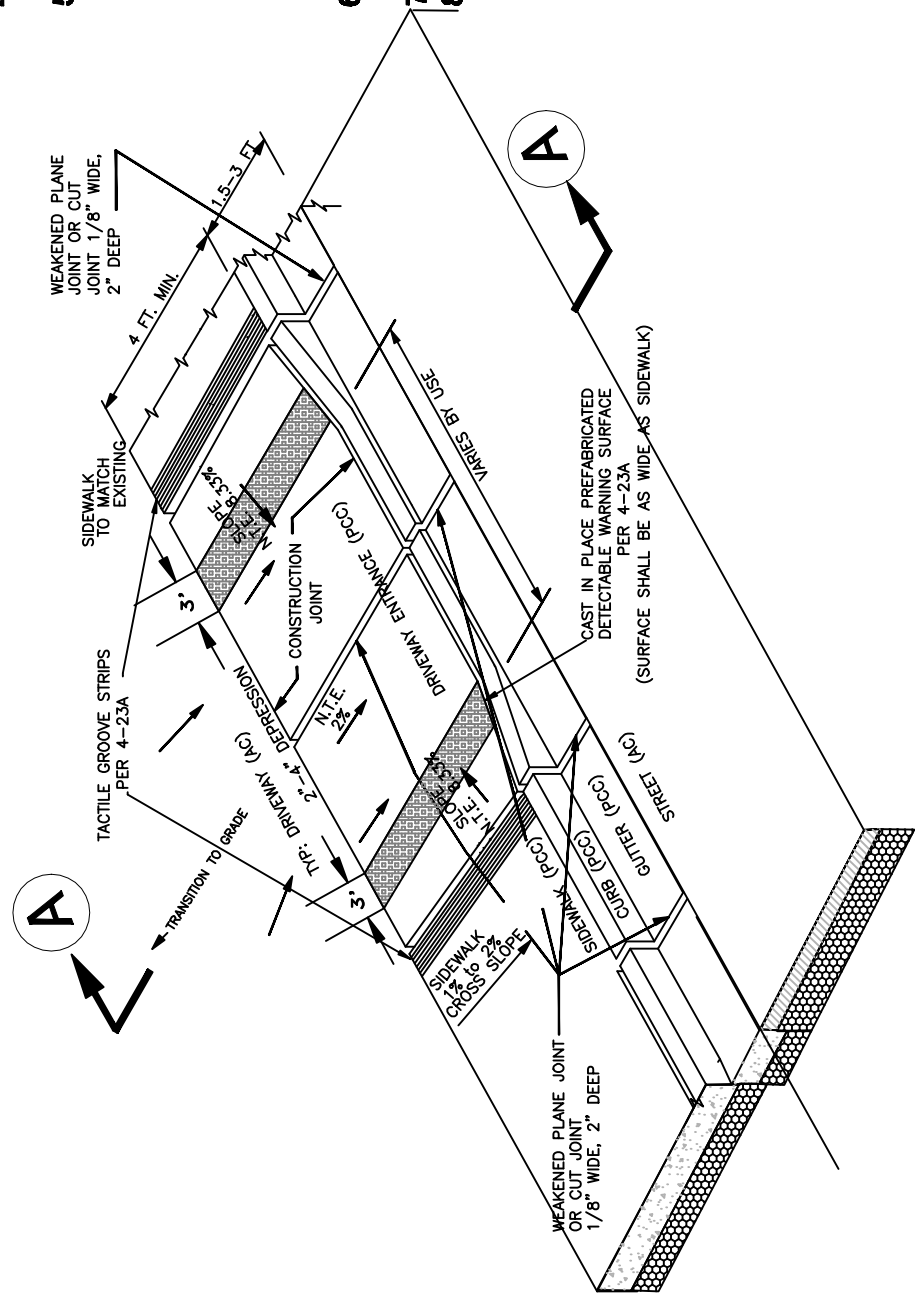
** TYPE 2 OR 1A CURB AND GUTTER PER SAC COUNTY STANDARDS



NOTES:

1. PCC = PORTLAND CEMENT CONCRETE
2. AC = ASPHALTIC CONCRETE
3. DRIVEWAY TO SIDEWALK TRANSITION IS CONTROLLED BY MAXIMUM 8.33% SLOPE.
4. DRIVEWAY, TRANSITION, AND SIDEWALK CROSS SLOPES SHALL NOT EXCEED 2%.
5. THE PROPERTY SLOPE FOR THE FIRST 20' BACK OF SIDEWALK MUST BE DESIGNED SO THE ALGEBRAIC DIFFERENCE OF THE PROPERTY SLOPE AND STREET SLOPE WILL NOT EXCEED 7% WITH VERTICAL CURB AND 10% WITH ROLLED CURB. IF PROPERTY SLOPE IS NEGATIVE, IT IS NOT TO EXCEED 5% FOR THE FIRST 20' FROM THE BACK OF SIDEWALK.
6. DRIVEWAY TO SLOPE UPWARD FROM C/L OF GUTTER TO RW LINE.
7. N.T.E. = NOT TO EXCEED
8. 1" LIP REQUIRED AT FLOW LINE

SECTION A-A



**CITY OF GALT
PUBLIC WORKS**

**COMMERCIAL
DRIVEWAYS
TYPE A-6**

SD 4-14A

DEC. 2003
NO SCALE